

SALADS

Caesar Salad

\$10.50

House Salad

Romaine, tomato, onion, cucumber, olives, banana peppers

\$10.50

Add Grilled Chicken or Chicken Cutlet, \$4.50

Fresh Mozzarella or Prosciutto \$4.50

Dressing Choices:

Ranch, Balsamic Vinaigrette, Oil & Red Vinegar
Creamy Italian, Honey Mustard



SIDES

Fries: \$5.95

Cheese Fries (w/ Wiz) \$7.95

Chicken Fingers & Fries: \$11.95

Long Hots 8oz \$4.99

Roasted Peppers 8oz \$4.99

Broccoli Rabe 8oz \$5.99

Spinach 8oz \$5.99

Meatball Side (2) \$5.00

With Marinara

Marinara (Quart) \$9.99

Meatball (6) \$13.99

With Marinara (Quart)

Sausage (6) \$13.99

With Marinara (Quart)

Dessert

Tiramisu \$5.99

Chocolate Mouse Cup \$5.99

Lemoncello Marscapone \$5.99

Cannoli \$4.50



All-Day Breakfast Sandwiches

Available on a steak roll, plain bagel, or everything bagel.

Egg & Cheese: \$5.99

Add Meat

Bacon, Pork Roll, Sausage

\$7.25

Pepper and Egg:

\$6.99

Steak and Egg:

\$10.50

Plain Bagel

\$3.50

with cream cheese



CATERING

Hoagie Trays

Small (Feeds 5-6): Choose 2 \$62.00

Large (Feeds 8-10): Choose 3 \$88.00

Cutlet Trays

Small (Feeds 5-6): Choose 2 \$62.00

Large (Feeds 8-10): Choose 3 \$88.00

Sausage Trays

Small (Feeds 8-10) \$54.00

Large (Feeds 16-18) \$86.00

Hot Pork Trays

Small (Feeds 8-10) \$54.00

Large (Feeds 16-18) \$86.00

Cheesesteak Trays

Small (6 sandwiches cut into thirds): \$90.00

Large (12 sandwiches cut into thirds): \$180.00

Salads

Caesar Salad

(Small Feeds 12-15): \$45.00

Large Feeds 20-25: \$66.00

Tossed Salad

(Small Feeds 12-15): \$45.00

Large Feeds 20-25: \$66.00

Dessert

Tiramisu Tray \$54.00

Cannoli Tray (12) \$19.75



9TH STREET ON MAIN

South Philly Sandwiches

Catering Available

Pickup Please Call

215-352-0300

Order Online

www.9thstreetonmain.com

40 S. Main Street Yardley, PA 19067

Hours of Operation:

Monday Closed

Tuesday – Friday: 10am – 6pm

Saturday: 10am – 4pm

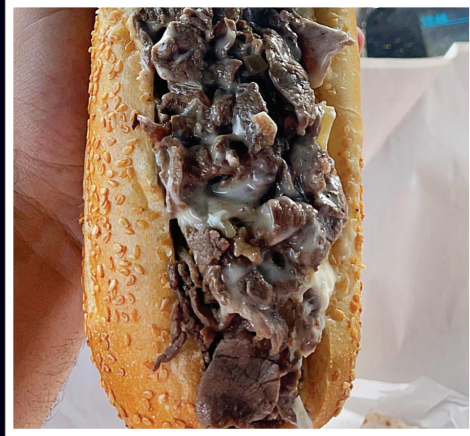
Open Sundays Only During Football Season

Sunday: 10am – 2pm

Steak Sandwiches

Made with sliced ribeye with or without fried onions.
Cheese choices: Cooper, America, Provolone, Whiz Options

- Plain Steak \$14.00
- Cheesesteak \$15.00
- Pizza Steak \$16.00



Chicken Steak Sandwiches

Made with chopped chicken breast. Options:

- Chicken Steak \$13.00
- Chicken Cheesesteak \$14.00
- Buffalo Chicken Cheesesteak \$15.00
- Toppings:
 - Mushrooms \$1.00
 - Green Peppers \$1.00
 - Long Hots \$2.00

Chicken Cutlet Sandwiches

Pan-fried the old-school way Options:

- Cutlet Hoagie
 - lettuce, tomato
 - Small (6'-7') \$9.40 • Half (10'-12') \$13.20
- Cutlet Italian
 - Sharp provolone, roasted peppers, rabe or spinach
 - Small (6'-7') \$9.95 • Half (10'-12') \$14.00
- 9th Street Cutlet
 - Prosciutto, broccoli rabe, long hots, sharp provolone
 - Small (6'-7') \$10.50 • Half (10'-12') \$15.00
- Spicy Cutlet
 - Sun-dried tomato pesto, arugula, tomato, white balsamic glaze
 - Small (6'-7') \$10.50 • Half (10'-12') \$15.00
- Chicken Parm:
 - Small (6'-7') \$9.95 • Half (10'-12') \$14.00

SOUTH PHILLY HOAGIES

Made on South Philly seeded bread with olive oil unless otherwise specified. Plain bread and wraps available.

- Original Sharp Italian
 - Coteghino, Genoa salami, pepperoni, hot coppa, sharp provolone, lettuce, tomato, onions
 - Small (6'-7') \$9.25 Half (10'-12') \$12.95 Whole (24') \$27.00
- Mild Italian
 - Coteghino, genoa salami, pepperoni, ham capicola, mild provolone, lettuce, tomato, onions
 - Small (6'-7') \$9.25 Half (10'-12') \$12.95 Whole (24') \$27.00
- Supreme Italian
 - Prosciutto, soppressata, sharp provolone, roasted peppers, lettuce, tomato, onions
 - Small (6'-7') \$10.50 Half (10'-12') \$14.00 Whole (24') \$29.50
- 9th Street Italian
 - Mortadella, prosciutto, sopressata, long hots, roasted peppers hot coppa, lettuce, tomato, onions
 - Small (6'-7') \$10.50 Half (10'-12') \$14.00 Whole (24') \$29.50
- Molisano
 - Prosciutto, fresh mozzarella, basil
 - Small (6'-7') \$10.50 Half (10'-12') \$14.00 Whole (24') \$29.50
- Porchetta
 - Roast pork, sharp provolone, spicy sundried tomato pesto, lettuce, tomato, onions
 - Small (6'-7') \$10.50 Half (10'-12') \$14.00 Whole (24') \$29.50
- Italian Veggie
 - Eggplant, rabe, sharp provolone, roasted peppers, balsamic
 - Small (6'-7') \$9.25 Half (10'-12') \$12.95 Whole (24') \$27.00
- Italian Tuna
 - Tuna packed in olive oil, sharp provolone, roasted peppers
 - Small (6'-7') \$9.25 Half (10'-12') \$12.95 Whole (24') \$27.00
- Tuna
 - Mayo, tuna, lettuce, tomato, onions
 - Small (6'-7') \$9.25 Half (10'-12') (10'-12') \$12.95 Whole (24') \$27.00
- Turkey & Cheese
 - Turkey breast, choice of cheese, lettuce, tomato, onions
 - Small (6'-7') \$9.25 Half (10'-12') (10'-12') \$12.95 Whole (24') \$27.00
- Ham & Cheese
 - Imported ham, choice of cheese, lettuce, tomato, onions
 - Small (6'-7') \$9.25 Half (10'-12') (10'-12') \$12.95 Whole (24') \$27.00
- Turkey BLT
 - Turkey breast, bacon, lettuce, tomato
 - Small (6'-7') \$10.50 Half (10'-12') (10'-12') \$14.00 Whole (24') \$29.50

CHEESE CHOICE: American • Cooper • Provolone • Sharp Provolone

Roast Pork Sandwiches

- Plain Roast Pork
 - w/ Natural Gravy
 - Small (6'-7') \$9.25 Half (10'-12') \$12.00
- Roast Pork
 - With Sharp or Mild Provolone
 - Small (6'-7') \$10.25 Half (10'-12') \$13.00
- Roast Pork Italian
 - sharp provolone, long hots, rabe or spinach
 - Small (6'-7') \$10.75 Half (10'-12') \$14.00



Meatball Sandwiches

- Plain w/ Marinara:
 - Small (6'-7') \$9.25 Half (10'-12') \$12.00
- Meatball Parm:
 - Small (6'-7') \$9.75 Half (10'-12') \$13.00

Eggplant Sandwiches

- Eggplant Parm:
 - Small (6'-7') \$9.25 Half (10'-12') \$13.00
- Eggplant Italian
 - Breaded eggplant, fresh mozzarella, tomato, roasted peppers, basil
 - Small (6'-7') \$9.75 Half (10'-12') \$14.00

Sausage Sandwiches

- Sausage Parm:
 - Small (6'-7') \$9.75 Half (10'-12') \$14.00
- Sausage & Peppers
 - Small (6'-7') \$9.75 Half (10'-12') \$14.00
- Sausage & Broccoli Rabe
 - With sharp provolone cheese
 - Small (6'-7') \$9.75 Half (10'-12') \$14.00